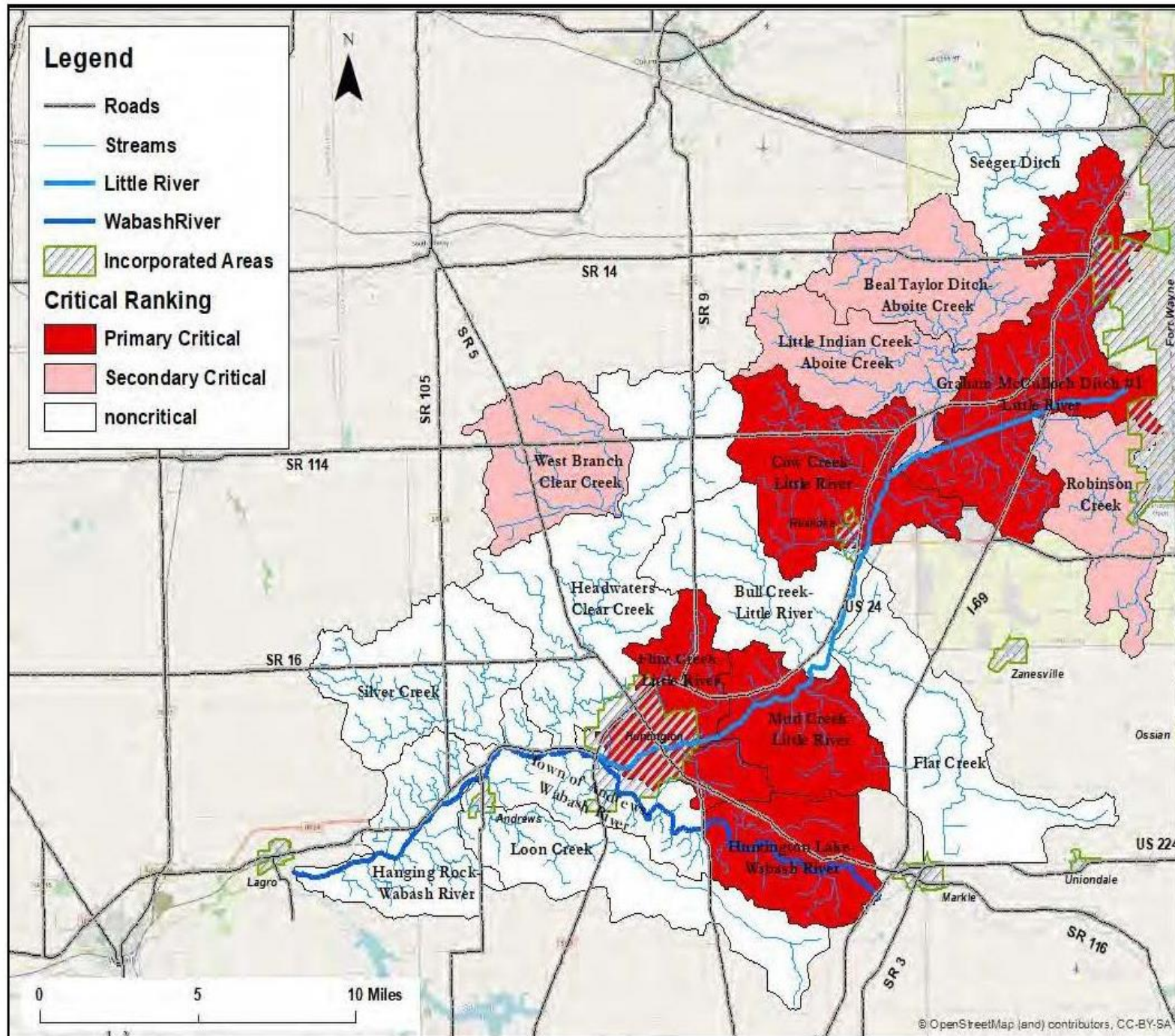
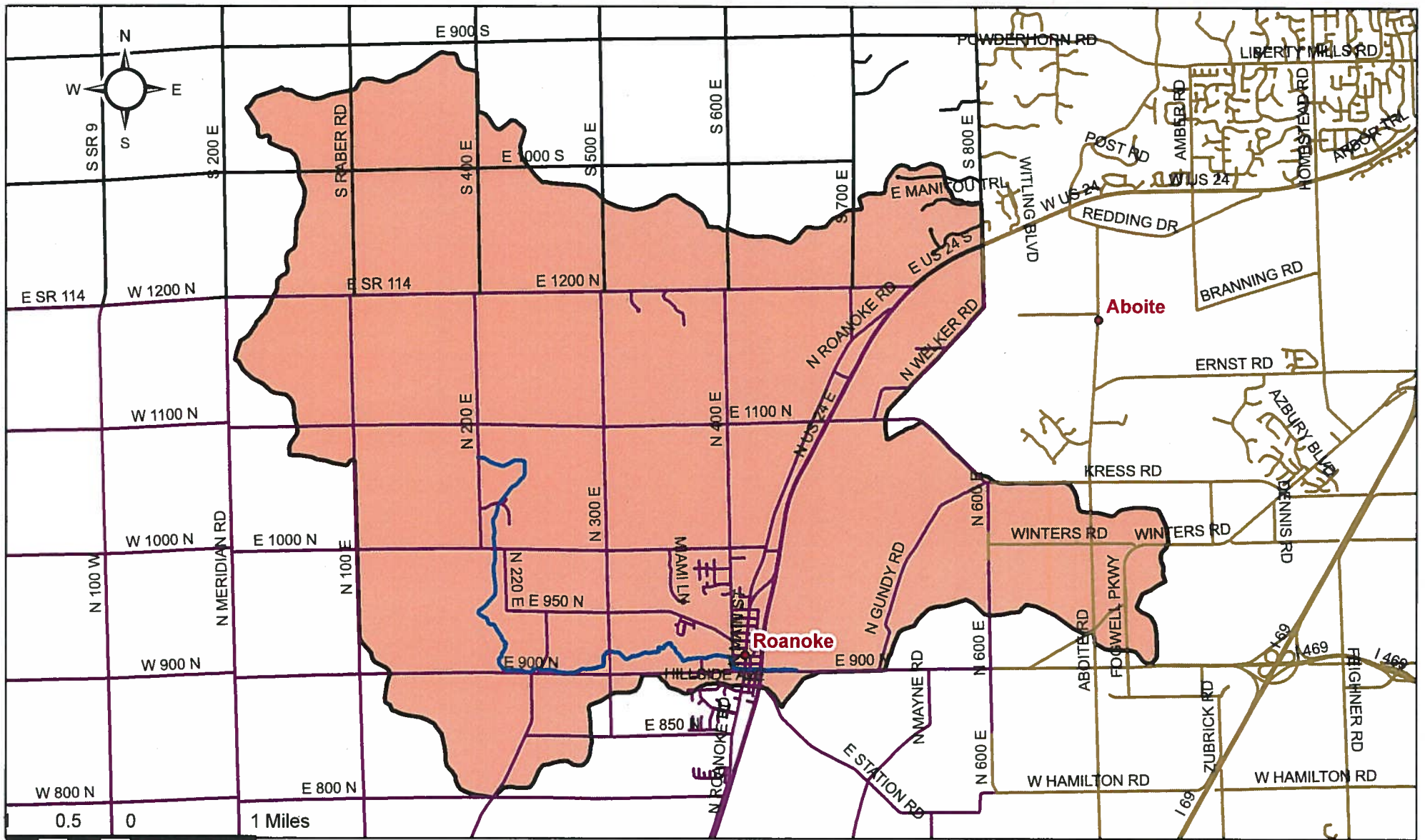


UPPER WABASH RIVER WATERSHED CRITICAL AREAS





Legend

NHDFlowline_Clip

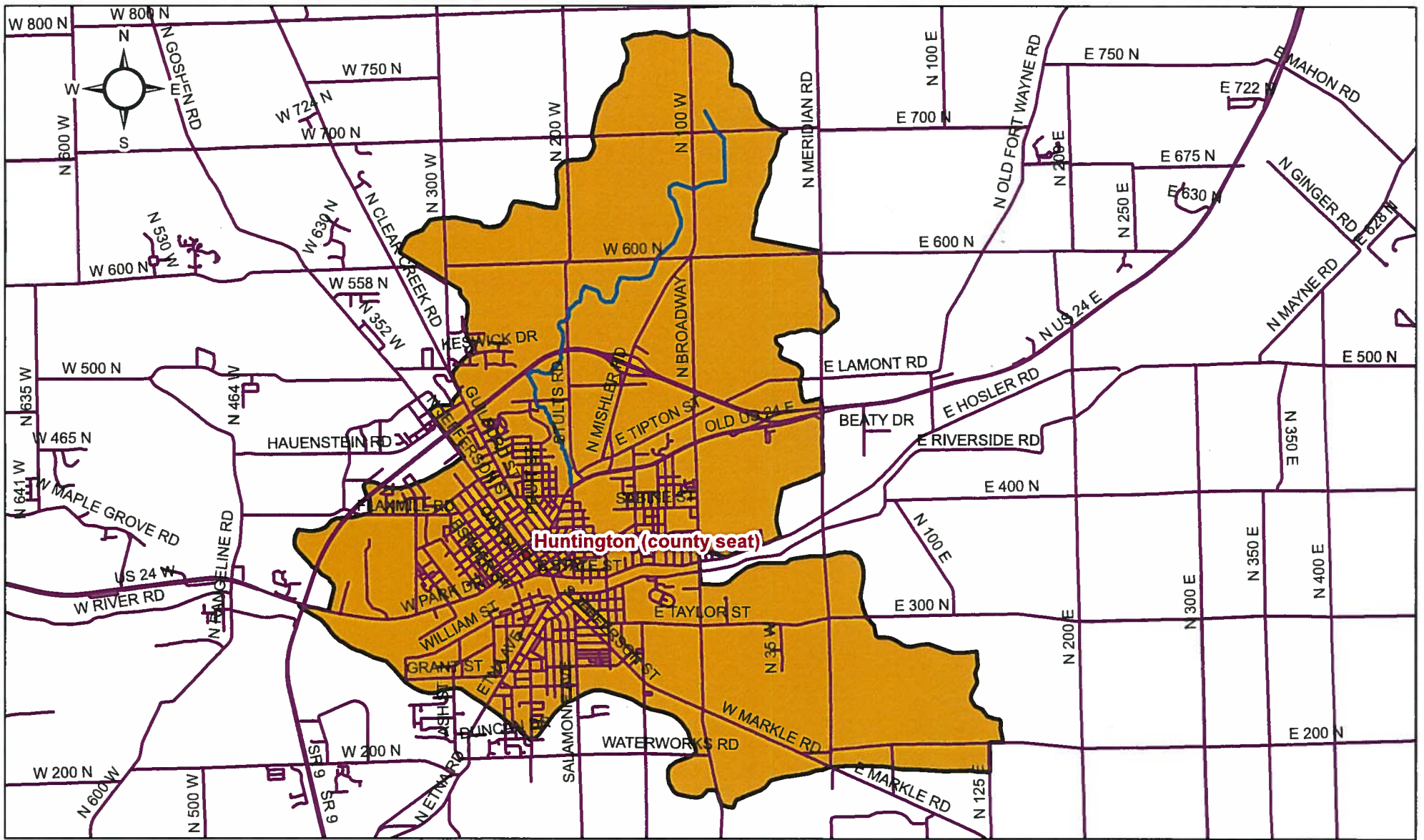
GNIS_Name

- Cow Creek
- Allen County Roads
- Huntington County Roads
- Whitley County Roads

Name

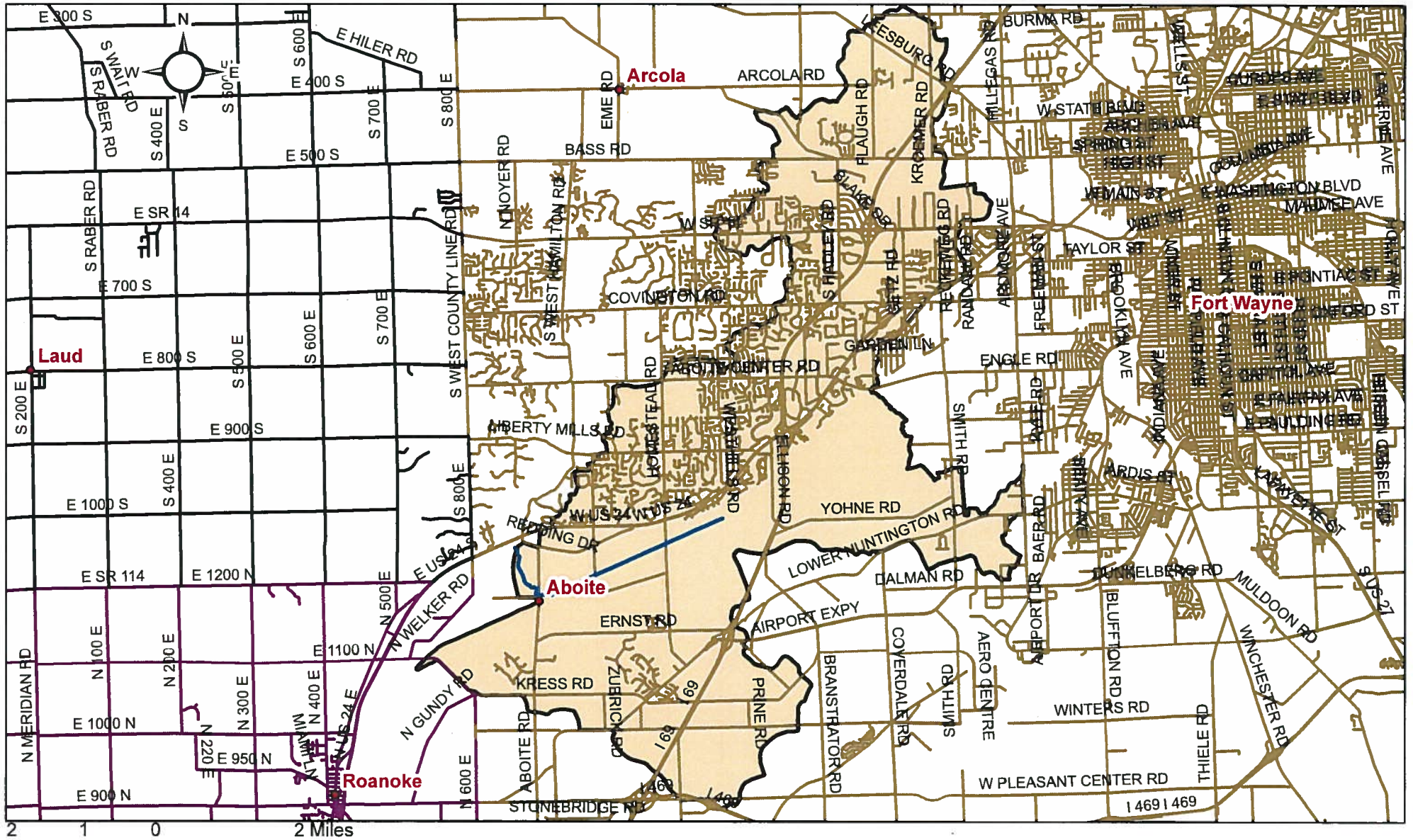
- Cow Creek-Little River

319 UWRW Tier 1 Cow Creek Map



319 UWRW Tier 1 Flint Creek Map

- Legend**
- NHDFlowline_Clip**
 - GNIS_Name**
 - Flint Creek
 - Huntington County Roads
 - Name**
 - Flint Creek-Little River



319 UWRW Graham McCulloch Ditch Number One Map

Legend

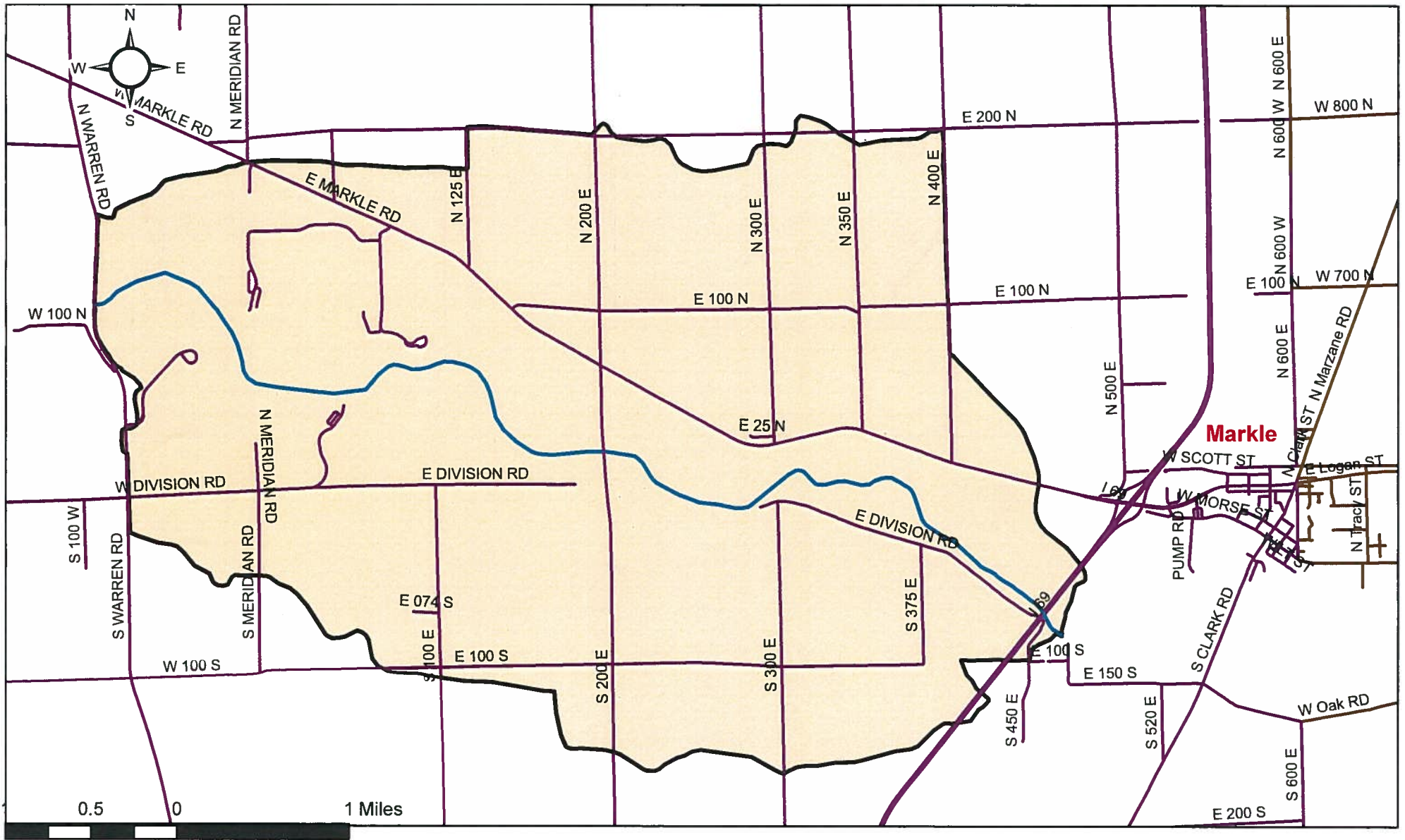
NHDFlowline_Clip

GNIS_Name

- Graham McCulloch Ditch Number One
- Allen County Roads
- Huntington County Roads
- Whitley County Roads

Name

- Graham McCulloch Ditch Number One-Little River



Legend

NHDFlowline_Clip

GNIS_Name

— Wabash River

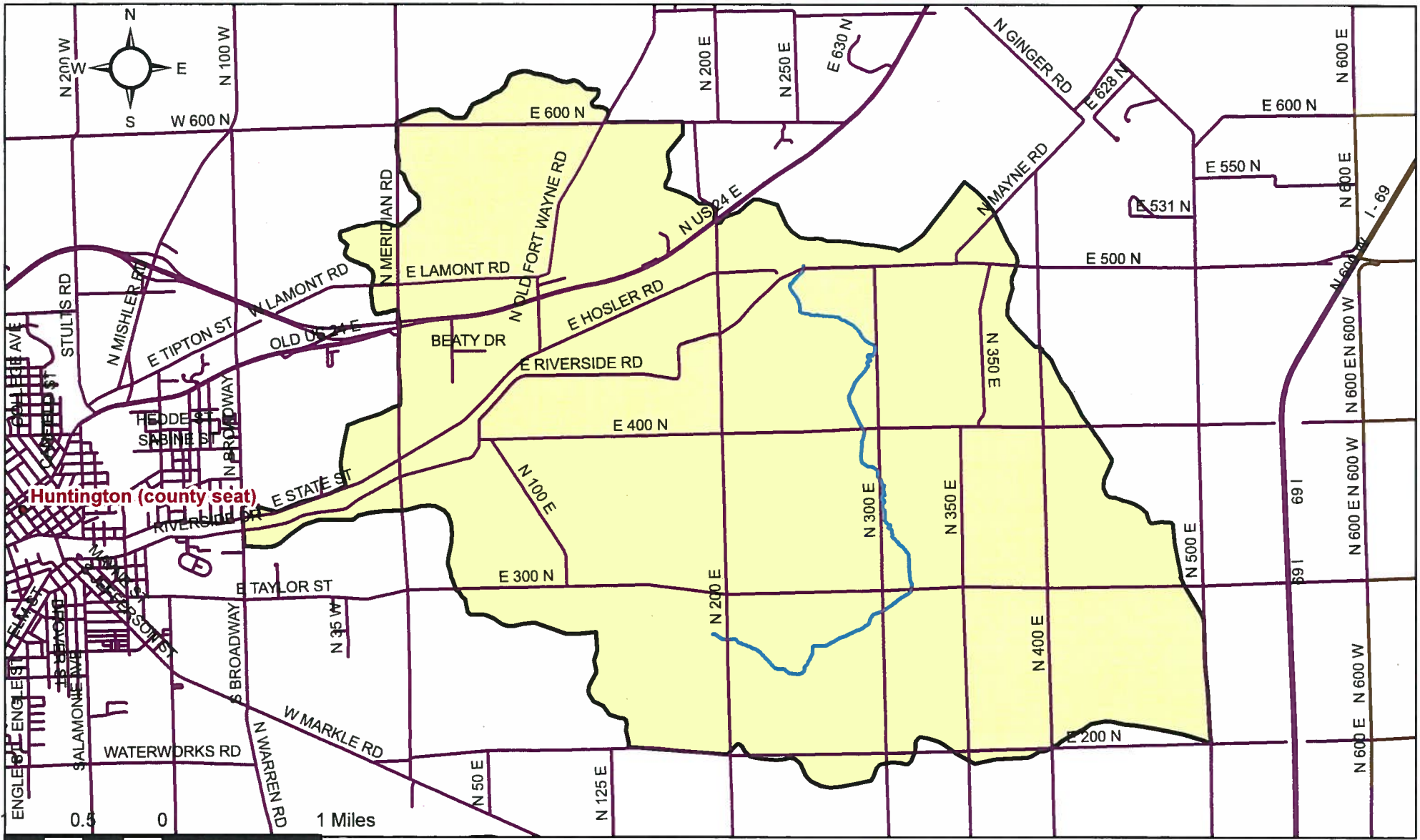
— Huntington County Roads

— Wells County Roads

Name

■ Huntington Lake-Wabash River

319 UWRW Tier 1 Huntington Lake-Wabash River Map



Legend

NHDFlowline_Clip

GNIS_Name

— Mud Creek

— Huntington County Roads

— Wells County Roads

Name

■ Mud Creek-Little River

319 UWRW Tier 1 Mud Creek Map