

## BMPs Eligible for Cost-Share

NRCS Code	Conservation Practice Name	Average Cost Guide and Practice Caps
340	Cover Crop	\$20/Acre single species; \$35/acre multiple species
393	Filter Strip	Approx. 474.15/Acre (Varies)
329, 345, 585, 590	Equipment Modification (Conservation Tillage, Cover Crops, Strip Cropping and/or Precision Nutrient Application)	Varies (\$15,000 Cap)
329	Residue and Tillage Management No-Till/Strip Till	\$17.07/Acre
345	Residue and Tillage Management Reduced Till	\$15.96/Acre
590	Nutrient Management	Varies \$6.53/Acre; \$13.86/Acre (with Manure)
412,484	Grassed Waterway (Mulching if Necessary)	Varies with width \$3,277-\$4,024/Acre, Mulching- Varies \$297-\$7,538/Acre
342	Critical Area Planning	Varies \$175.63-\$435.08/Acre
638, 606	Water and Sediment Control Basin with Subsurface Drain	\$2.64/Cu. Yd, Subsurface Drain-Varies with size. \$1.94-\$10.23/foot
390	Riparian Herbaceous Cover	Approx. \$452.29/Acre
512	Forage and Biomass Planting	Varies \$26.45-\$371.33/Acre
472	Animal Exclusion from Sensitive Areas	\$51.44/Acre
614	Watering Facility (Permanent)	\$1,002.88
382	Fence	\$1.65/foot
561	Heavy Use Area Protection	\$1.13/sq. foot
391	Riparian Forest Buffer	\$1,013.76/Acre
528	Prescribed Grazing	Varies \$21.55-\$45.80/Acre
580	Stream Bank and Shoreline Protection	\$44.36/foot (\$2,000 cap on urban practices.)
582	Two Stage Ditch	\$8.79 foot (\$32,000 Cap)
612	Tree & Shrub Establishments (Erosion Control)	\$906.68/acre
635	Vegetated Treatment (secondary practice)	\$6,273.37 maximum rate
575	Trails & Walkways	\$6.06/foot – Rock/Gravel on geotextile; \$1.30/foot - Vegetated

## Contact Information

### Huntington County SWCD

Cheryl Jarrett  
2040 Riverfork Drive, Huntington, IN 46750  
260-356-6816 ext. 3  
District Conservationist: Robert Pate  
260-356-6816 ext. 112  
[robert.pate@usda.gov](mailto:robert.pate@usda.gov)

### Allen County SWCD

Courtney Taylor  
9602 Coldwater Rd. Suite 104,  
Fort Wayne, IN 46825  
260-484-5848 ext. 3  
District Conservationist: Tim Bomba  
260-484-5848 ext. 3  
[tim.bomba@usda.gov](mailto:tim.bomba@usda.gov)

### Wabash County SWCD

Penny Tackett  
599 Bryan Avenue, Wabash, IN 46992  
260-563-7486 ext. 3  
District Conservationist: Adam Jones  
260-563-7486 ext. 104  
[adam.jones@usda.gov](mailto:adam.jones@usda.gov)

### Wells County SWCD

Lynne Huffman  
117 West Harvest Road, Bluffton, IN 46714  
260-824-0624 ext. 3  
District Conservationist: Sara Day  
260-824-1930 ext. 3  
[sara.day@usda.gov](mailto:sara.day@usda.gov)

### Whitley County SWCD

Nadean Lamle  
788 W. Connexion Way, Suite C  
Columbia City, IN 46725  
260-244-6266 ext. 3  
District Conservationist: Jeremy Palmer  
260-244-6266 ext. 3  
[jeremy.palmer@usda.gov](mailto:jeremy.palmer@usda.gov)

This project has been funded wholly or in part by the United States Environmental Protection Agency under assistance agreement C9-97548217 to the Indiana Department of Environmental Management. The contents of this document do not necessarily reflect the views and policies of the Environmental Protection Agency, nor does mention of trade names or commercial products constitute endorsement or recommendation for use.

# Upper Wabash River Watershed Cost-Share Program

*Allen, Huntington, Wabash,  
Wells and Whitley Counties*



*Funded by an IDEM Clean  
Water Act Section 319 Grant*

*Managed by the Huntington  
County SWCD*

# Upper Wabash River Watershed Cost-Share

## Program Description

This voluntary cost-share program is designed to provide local landowners with financial and technical assistance to install conservation practices, also known as Best Management Practices (BMPs) within the UWR watershed. BMPs are proven practices that enhance soil health and water quality.

## Who is Eligible?

Farm operators, livestock owners, and landowners within Tier 1 and 2 critical areas are encouraged to apply. All applicants must use funding on land that lies within Tier 1 and Tier 2 areas of the watershed. Your local Soil & Water Conservation District (SWCD) office can help you determine if your land is located within one or more of these priority areas.

## Priority Areas (Tier 1 & 2)

Tier 1 & 2 sub-watersheds of the UWR watershed have been identified for excess nutrients, sediments, and E. coli.

### [HUC12 sub-watersheds designated as Tier 1:](#)

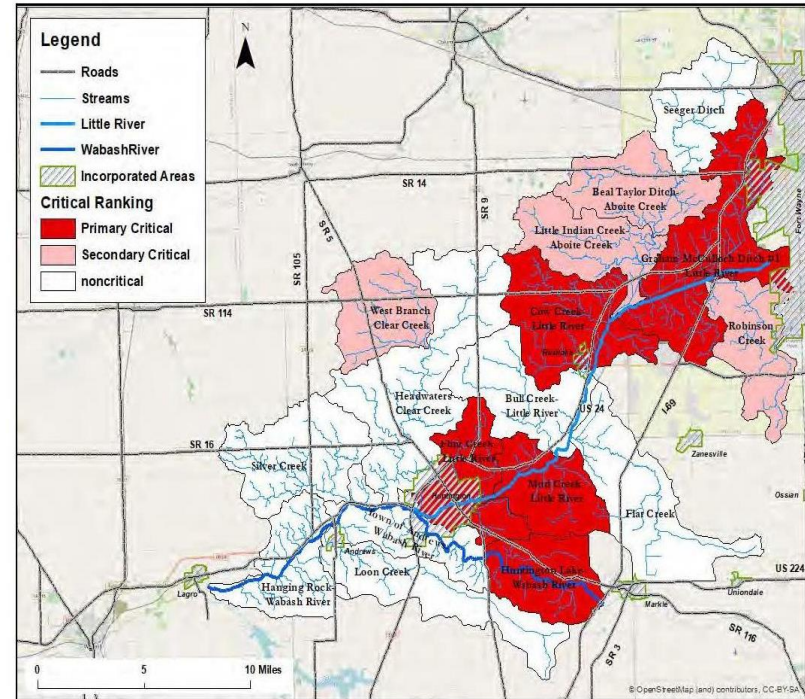
- Cow Creek-Little River
- Flint Creek-Little River
- Mud Creek-Little River
- Huntington Lake-Wabash River
- Graham McCulloch Ditch-Little River

### [HUC12 sub-watersheds designated as Tier 2:](#)

- Beal Taylor Ditch-Aboite Creek
- Robinson Creek
- Little Indian Creek-Aboite Creek
- West Branch-Clear Creek

## Important Dates

- Applications will be reviewed on a continual basis
- Applications will be accepted no later than **September 1, 2024.**
- All practices must be installed, and invoices delivered to Huntington County SWCD by **October 1, 2024**



## Financial & Technical Assistance

For all projects, the maximum cost-share is 75% of the actual cost or average costs, whichever is less. Some practices have funding caps as noted in the BMP's Eligible for Cost-Share table, with up to \$35,000 cap per producer for term of the grant.

Reimbursement will follow the installation and inspection of the project. Technical assistance and conservation planning is supported by local SWCDs and NRCS. BMPs must meet NRCS design and installation specifications.

## How to Apply

To apply, you must **1)** fill out and return the 319-A Agricultural Cost-Share Form to the Huntington County SWCD. Forms may be turned in to local SWCDs and forwarded to the Huntington County SWCD. **2)** Fill out the W-9 Taxpayer Identification Form. Application packets are available at your local NRCS and SWCD offices. Applications will be evaluated using procedures outlined by the steering committee.